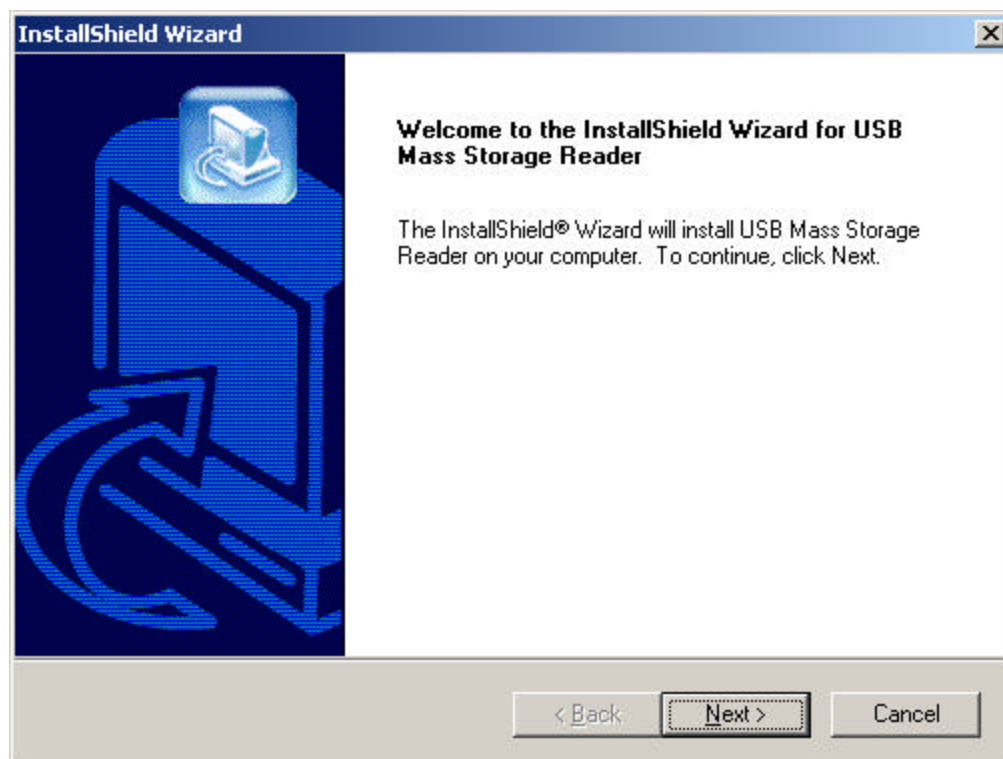


NOTE: DRIVERS MUST BE INSTALLED FIRST. DO NOT PLUG IN READER FIRST THEN LOAD DRIVERS.

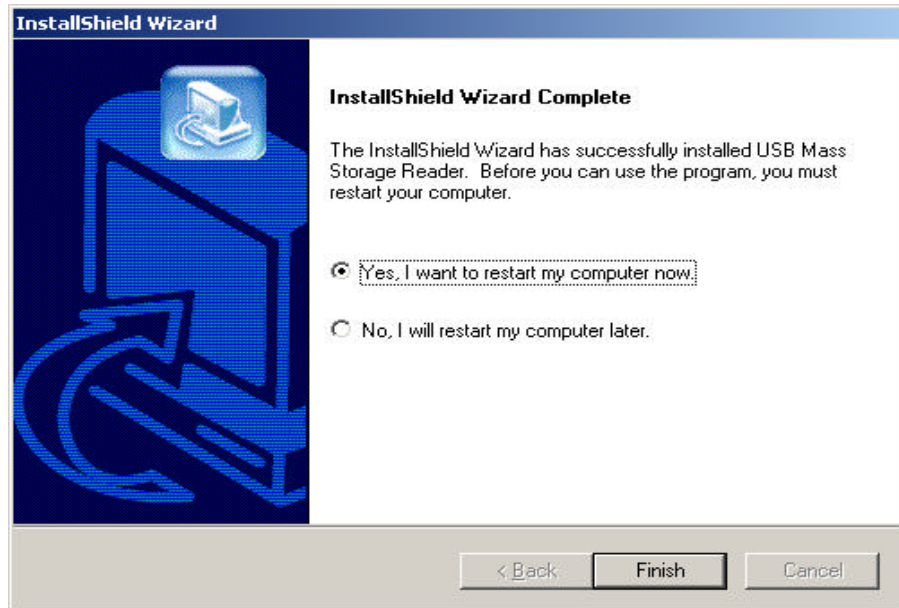
NOTE: For Windows 95 users ONLY Before installing drivers for this reader you must first have all downloads from Microsoft for USB Support. They can be found at www.microsoft.com under the Downloads section.

NOTE: For Windows NT users this reader is not supported in this operating system.

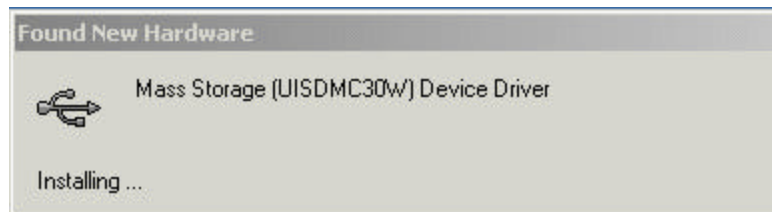
1. Turn PC on and wait until you are at the Desktop.
2. Insert the installation CD that came with your reader into the CD-ROM drive and wait for the Setup Screen to appear. (If the Setup screen DOES NOT automatically appear, then double click the My Computer icon, then double click the CD-ROM drive. Find the Setup.exe icon and double click on it. Then continue on to step 3)
3. The first screen you will see is the Welcome to the Install Shield Wizard for USB Reader. At this screen click the Next button. This will install the drivers onto your computer.



4. Once the installation is done it will ask you do reboot your computer. Click **Yes, I want to restart my computer now** and then click the **Finish** button. Your computer will now reboot.



5. After you computer has rebooted plug the reader back in. Once the reader is connected you will see the **Found New Hardware** box below. When Windows finishes finding the new hardware you will see the picture in step 6.



6. After the installation has completely finished you can start using your card reader. To access your cards with your reader you will need to open one of the two drive letters that will be assigned to your reader (depending on the type of card you are using determines which drive letter you will use to access your cards).

