

SafeNet DataSecure 400 Series

Unparalleled Performance, Availability, and Security

Key Features

Optimal Security—

Addresses a broad range of threats with capabilities for robust encryption, secure key management, segregation of duties, strong AAA support, and more—all with a FIPS 140-2 Level 2 and Common Criteria EAL2 compliant appliance.

Maximum Performance and Availability—

Offloads processing-intensive cryptographic functions from servers, and offers capabilities for processing over 100,000 encryptions per second.

Streamlined implementation—

Integration is automated and transparent to applications; administration is intuitive; and because all keys and policies are managed on a centralized appliance, ongoing maintenance is streamlined.

For those looking to implement encryption of sensitive data in the enterprise, products from SafeNet® represent a comprehensive solution for deployment throughout your network. SafeNet DataSecure® offers the highest level of security available in a commercial solution that features breakthrough performance, high availability, and streamlined implementation. With DataSecure, organizations can now enjoy:

- Optimal security, through an appliance that meets the highest standards of security certification, robust cryptography, and centralized key and policy management.
- Maximum performance and availability, through an appliance that offers the highest levels of throughput and responsiveness available.
- Streamlined implementation, through a single solution that features broad infrastructure coverage, automated deployment, and application transparency.

DataSecure delivers capabilities for field-, column- and file-level encryption, seamless integration, and centralized key and policy management—enabling organizations to deploy an end-to-end encryption strategy with unparalleled ease and cost effectiveness. With its capabilities for encryption of sensitive data in Web servers, application servers, databases, file systems, and distributed environments, DataSecure enables organizations to protect the sensitive data that pose a business or liability risk—whether credit card numbers, social security numbers, or other sensitive information.

DataSecure is comprised of three components:

- The DataSecure appliance, a dedicated hardware system.
- Connector software, a software component that is installed on the Web server, application server, database, mainframe or file system that interfaces with the DataSecure appliance.
- The EdgeSecure appliance, a dedicated hardware system optimized for remote locations.



SafeNet offers a variety of configurations, ensuring Ingrian customers get a solution tailored to their specific security, performance, and budget requirements. For enterprises that demand the utmost in security, performance, and availability, Ingrian offers the DataSecure 400 Series appliance.

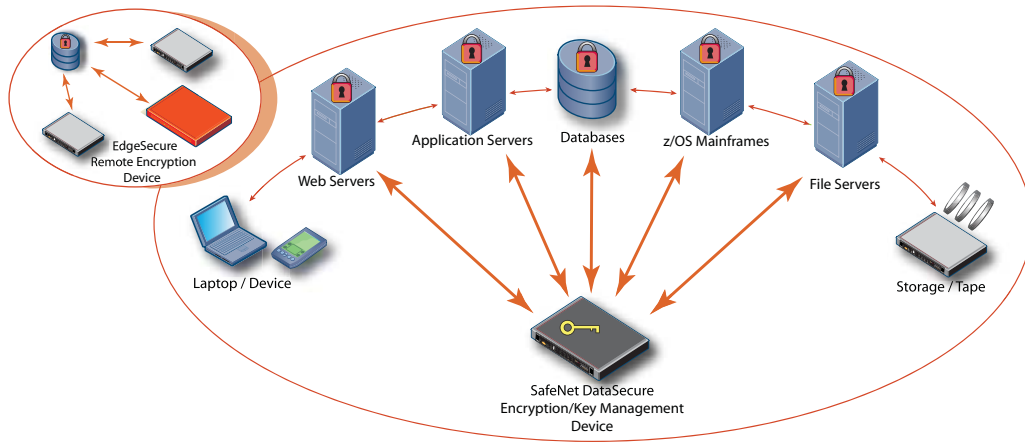
Optimal Security

Offering the highest level of security in a commercial encryption solution, the DataSecure 400 Series appliance is compliant with FIPS 140-2 Level 2 and Common Criteria Evaluation Assurance Level 2. DataSecure centralizes all cryptographic processing, key management, logging and auditing, and security policies on a single, hardened appliance, which maximizes overall security.

DataSecure offers a range of robust security features:

- Capabilities for segregating administrative duties so key controls are shared among multiple administrators.
- Secure, multi-factor authentication and access control between databases and servers and the DataSecure appliance.
- Granular authorization capabilities that enable constraints to be placed on user operations based on specific key permissions.
- Active alerting capabilities so that, if attempts to breach protected data occur, mechanisms are employed to alert administrators.
- Comprehensive backup and restore functionality and disaster recovery features.
- Support for AES, 3DES, RSA, HMACSHA-1, and other cryptographic algorithms.





SafeNet DataSecure is a robust, high performance and high availability platform that can be integrated at the web, application, and database layer. DataSecure offers granular encryption, centralized security management, and seamless, flexible integration.

Maximum Performance and Availability

DataSecure centralizes all cryptographic processing on a highly specialized appliance that delivers performance robust enough for the most demanding processing environments. A single appliance can handle over 100,000 encryptions per second, and SafeNet makes it easy, through load balancing capabilities, to add additional appliances and boost scalability as performance needs dictate. Further, by offloading CPU-intensive cryptographic processing from disparate servers and databases, DataSecure restores server and database performance to optimal levels—resulting in less waiting for information and higher resource utilization. Designed specifically for business-critical processing, DataSecure also features replication, RAID support, health checking, and disaster recovery capabilities.

Streamlined Implementation

With its broad deployment capabilities and infrastructure coverage, DataSecure can be used to manage and entire enterprise's encryption deployment. With DataSecure, implementation is:

- Transparent to applications—DataSecure can be deployed with complete application transparency, dramatically implementation time and costs.

- Centralized—by centralizing administration of cryptographic policies and configuration, DataSecure streamlines ongoing administration and reduces cost.
- Flexible—DataSecure can be integrated wherever an organization's security and business needs dictate, offers support for leading, standards-based cryptographic algorithms, and supports products from a range of third-party vendors.

Enterprise Data Protection

SafeNet DataSecure400 is a key component of SafeNet's comprehensive enterprise data protection solution to reduce the cost and complexity of regulatory compliance, data privacy, and information risk management. SafeNet Enterprise Data Protection (EDP) is the only solution that secures data across the connected enterprise, from core to edge, with 360-degree protection of data at rest, data in transit, and data in use. Unlike disparate, multi-vendor point solutions that can create limited "islands" of security, SafeNet EDP provides an integrated security platform with centralized policy management and reporting for seamless, cost-efficient management of encrypted data across databases, applications, networks, and endpoint devices. For more information, visit www.safenet-inc.com/EDP

Corporate Headquarters:

4690 Millennium Drive, Belcamp, Maryland 21017 USA
Tel.: +1 410 931 7500 or 800 533 3958, Fax: +1 410 931 7524,
Email: info@safenet-inc.com

EMEA Headquarters:

Tel.: +44 (0) 1276 608 000, Email: info.emea@safenet-inc.com

APAC Headquarters:

Tel: +852 3157 7111, Email: info.apac@safenet-inc.com

For all office locations and contact information, please visit www.safenet-inc.com/company/contact.asp

©2008 SafeNet, Inc. All rights reserved. SafeNet and SafeNet logo are registered trademarks of SafeNet. All other product names are trademarks of their respective owners.
PB-DataSecure400-12.10.08



www.safenet-inc.com

Technical Specifications

Performance

- Processes more than 100,000 encryptions per second
- Scalable to hundreds of thousands of encryptions per second via clustering of multiple DataSecure platforms
- Less than 100 microseconds latency

Security Algorithms

- 3DES, DES, AES, RSA (signatures and encryption), RC4, SHA-1, HMACSHA-1

Asymmetric Key Sizes

- 512, 1024, 2048

Symmetric Key Sizes

- 40, 56, 128, 168, 192, 256

Certificate Management

- Multiple certificates, built-in certificate authority, manage certificate requests, certificate revocation list (CRL) support

Network Management

- SNMP (v1, v2, and v3), NTP, URL health check, signed secure logs, syslog, automatic log rotation, secure encrypted and integrity checked backups and upgrades, extensive statistics

System Administration

- Secure Web-based GUI, secure shell (SSH), console

Web and Application Servers Supported

- BEA, IBM, IIS, Oracle, Apache, Sun ONE, JBoss, SAP, PeopleSoft, and more

Databases Supported

- IBM DB2, Microsoft SQL Server, Oracle, and Teradata

Mainframes Supported

- IBM z/OS

Enclosure

- Form Factor: 1U, rack mountable (Height: 1.7"; Width: 19"; Depth: 30")

Network Interfaces

- 2 x 10/100/1000 Mbps Fans
- Eight system cooling fans